



insights for the life of your business™

# MAS 90 MAS 200

Client/Server

## REPORTS

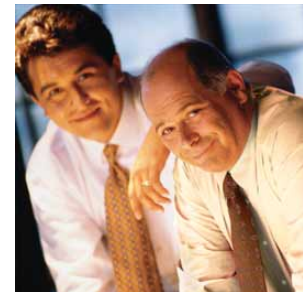
Save your report settings for the robust General Ledger reports by user. The standard General Ledger reports include:

- Chart of Accounts
- General Ledger Worksheet
- General Ledger Trial Balance
- General Ledger Detail Report
- General Ledger Detail by Source Report
- Exception Report
- Reprint Journals
- Source Journal History Report
- General Ledger Graphics
- Budget and History Report
- Budget and History Report by Period
- Account Audit Report
- Account Memo Printing
- Main Account Memo Printing

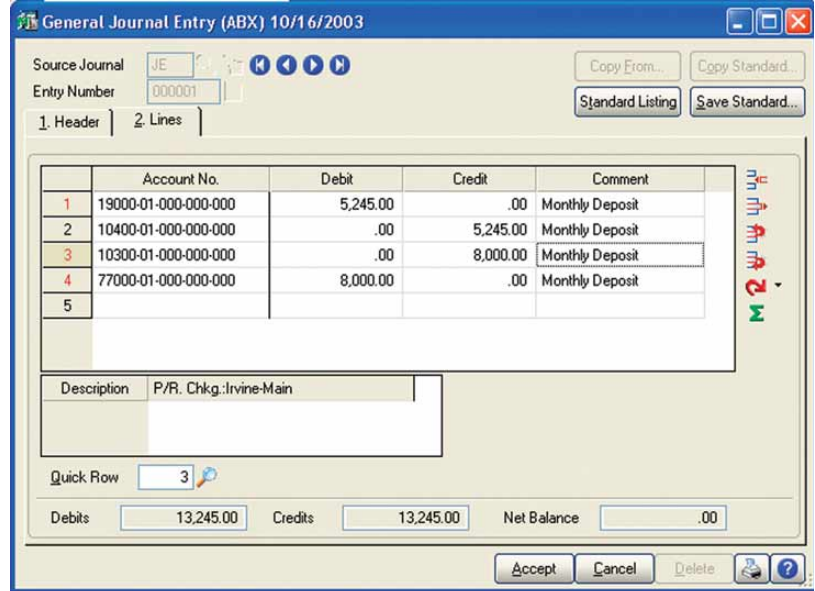
In addition to the Standard General Ledger Reports, MAS 90 includes a powerful Financial Report Wizard enabling you to create additional reports such as:

- Trend Reports
- Income Statements
- Balance Sheets
- Statement of Cash Flow Reports

Report Groups may be set up to easily identify your specific report settings. (For more information on reporting capabilities please see the Reporting Capabilities Specification Sheet.)



## GENERAL LEDGER



### Flexible and Easy to Implement

The adaptable design of the MAS 90 and MAS 200 General Ledger module allows you to use your current chart of accounts or create a new chart of account structure from over a dozen industry-specific selections, making implementation quick and easy. The General Ledger uses our exclusive dual grid entry for quick, efficient and accurate data entry. The grid entry format allows you to easily customize the data entry screens. Once you have created a transaction, selecting to delete a row, move a row up or down, or change a value is easy — you can also use the built-in calculator to easily modify it. You can even reset a row or all rows by using the reset feature.

### Valuable Business Insights

The ease of use combined with the powerful attributes of the General Ledger module streamline all bookkeeping and accounting transactions, and the resulting reports provide important business insights. MAS 90 and MAS 200 General Ledger offers virtually unlimited financial reporting capabilities. In addition to the standard General Ledger reports, MAS 90 and MAS 200 provide the ability to create financial statements such as Income Statements, Cash Flow Statement, Balance Sheet and Trend reports. All financial reports are created and modified through an easy-to-use wizard so you can simply select formatting options to create a report specific to your business needs. Gaining quick and accurate insight into your business is critical to maintain your competitive edge. MAS 90 General Ledger provides a key method for you to stay on top of your financial information.



## MAS 90 and MAS 200 General Ledger

*"Ease of use was our biggest requirement, and we definitely got it in MAS 90. The application was so straightforward we were able to figure everything out on our own, without taking formal classes."*

*Debra Didier, Comptroller  
Tropical Sno*

### FEATURES:

Flexible Chart of Account Structure	Create an account structure to fit your business needs with up to 32 characters and 10 segments. Or choose from over a dozen industry-specific charts of accounts.
Account Statuses	Each GL account can be assigned a status – active, inactive or deleted. Inactive or deleted statuses cannot be posted to account(s).
Start/End Dates	Assign starting and ending dates to main or sub-accounts to maintain additional control over your chart of account structure.
Roll-Up Codes	Create up to 4 roll-up types and unlimited roll-up codes for additional reporting flexibility outside your chart of accounts.
Batch Entry	Create public or private batches in General Journal Entry and Transaction Journal Entry for more control over postings to your general ledger.
Flexible Accounting Periods	Provides up to 13 user-defined accounting periods in each fiscal year. You can specify ending dates for each period. Maintain non-financial information such as head count, square footage, unit sales and inventory quantity. Include non-financial information on custom financial reports.
Transaction Detail Drill Down	Display detailed transactions for an account at any time, and search for transactions by period, source journal inquiry or comment.
Multi-Year History Retention	Retain up to 99 years of transaction history and/or period summary history. Post to an unlimited number of future fiscal years, or reopen a past year and specify the fiscal year to be used for printing general ledger reports.
Non-Financial Accounts	Maintain non-financial information such as head count, square footage, unit sales and inventory quantity. Include non-financial information on financial reports, and in allocation calculations.
Allocation Entries	Automatically post an amount from a single-source account to multiple destination accounts. Calculate the amount to be posted to each of the destination accounts based on a percentage allocation, a quantity, such as headcount or square footage, or based on a value from another destination account.
Financial Statements	Income Statements, Balance Sheet Statements, Cash Flow Statements and trend reports can be produced automatically with the easy-to-use financial reporting wizard. Include actual budget, budget variance and prior-year information on standard period-to-date and year-to-date income statements. Select the type of data to be printed for each column. Round dollar amounts, print dollar signs, add, delete or copy footnotes are just a few of the options for formatting financial statements. Supports values up to \$99,999,999,999.99.
FRx Desktop	Build General Ledger lists automatically and pull your accounting data directly from the application by linking with Microsoft FRx Desktop. Take advantage of advanced financial reporting and flexible customization capabilities.
Account Masterfile Audit	Audit changes, deletions or additions to the account masterfile using the Account Masterfile Audit report.
Delete Accounts/ Change Accounts	Easily delete or change account numbers without having to manually renumber each entry.
Budgets	Maintain an unlimited number of budgets. Edit multiple budgets and accounts simultaneously.
One Step Bank Transfers	When integrated with the Bank Reconciliation module, transfer funds between banks in one, easy transaction journal entry.