



insights for the life of your business™

# MAS 90 MAS 200

Client/Server  
Client/Server for SQL Server

## REPORTS

- Daily Overhead Allocation Register
- Daily Transaction Register
- Job Analysis Report
- Job Billing History Report
- Job Billing Recap Report
- Job Billing Register
- Job Billing Selection Register
- Job Close-Out Report
- Job Cost Code Detail Report
- Job Estimate
- Job Estimate by Cost Code Report
- Job Estimate Materials Report
- Job Field Report Register
- Job Invoice
- Job Masterfile Listing
- Job Posting Register
- Job Profitability Report
- Job Schedule Report
- Job Transaction Detail Report
- Monthly Overhead Allocation Report
- Subcontractor Analysis Report
- Work in Process Report

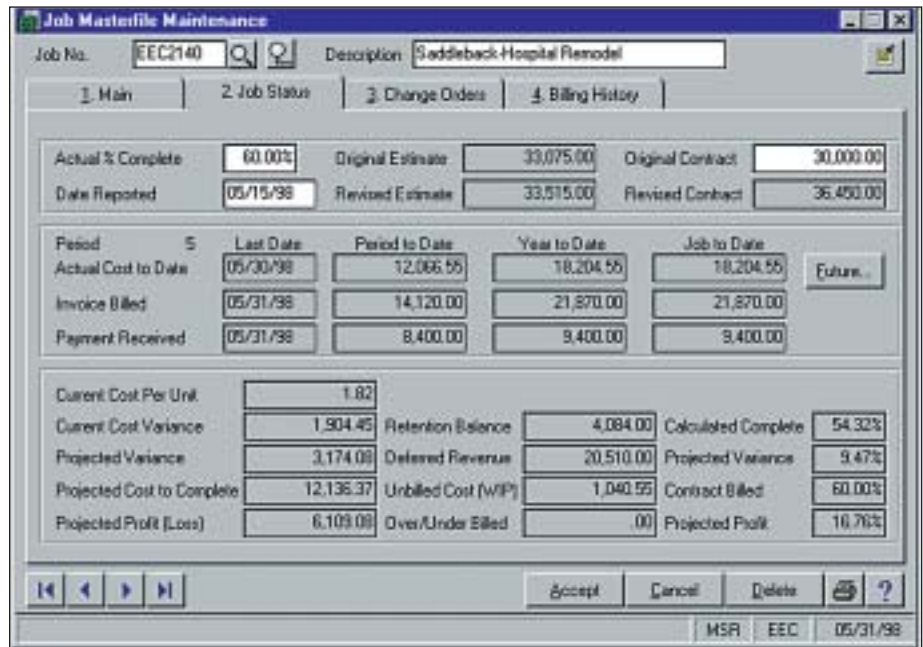
## BUSINESS ALERTS

Business Alerts is a separate module that monitors your MAS 90 database and can send e-mail notifications to appropriate staff, customers or vendors based on specific business events. Predefined Job Cost alerts included are:

- Job approaching/exceeding estimate
- Job status change
- Job change order



## JOB COST



Powerful management reporting, detailed accounting capabilities, flexibility and control best describe the MAS 90 and MAS 200 Job Cost module. This module is specifically developed for general contractors, subcontractors, architects and engineers in construction and project-oriented industries. In today's competitive market, with profit margins getting tighter, the Job Cost module is an essential management tool for keeping a close eye on job profitability.

Job Cost gives you the ability to track cost and revenue information down to fine detail for every job (project). Powerful sub-modules including Project Estimating, Billing, and Time and Materials Invoicing are built in to streamline the entire process. Know where your bid proposals and projects stand with up-to-the-minute status reports.

Project estimating allows you to calculate estimated costs in preparation for a proposal. Maintain a masterfile of standard material and labor costs upon which you can base estimates. After a proposal is accepted, you can easily transfer estimate information to establish budgets for the new job. Once in progress, analyze actual to budget costs, allowing adjustments to maintain profitability throughout the job. Whether you invoice on a completed contract or a percentage of completion, Job Cost will handle all billing requirements.

The Job Cost module can integrate with Accounts Receivable, Accounts Payable, Payroll, Inventory Management, Purchase Order and General Ledger to ensure your ability to share common information required in an efficient job cost system. And adding Business Alerts can keep your staff on top of daily changes in the business. Controlling costs is key to success. Don't start a job without MAS 90 and MAS 200 Job Cost.

*continued on reverse*



## MAS 90 and MAS 200 Job Cost

*“Job costing was a big feature for us, and detailed reporting an absolute must. MAS 200 excels at both.”*

*Rodney Aguiar, Controller  
DuPar & Angel Manufactured Housing*

### FEATURES:

Flexible Job Numbering	Up to seven characters may be used to designate a job. Large jobs may be broken into “sub-jobs.”
Flexible Cost Codes	Phases, steps or other categories may be designated using up to nine characters in three segments.
Flexible Cost Types	Each cost code may be detailed with up to 12 user-defined cost types, such as labor, overhead, materials, etc.
Overhead and Burden Allocation	Overhead costs are automatically allocated to the job based upon the percentage of work in process. Overhead may be applied on a daily or monthly basis. Burden allocation is the indirect cost associated with labor expenses (i.e., union contributions or employer’s tax) which are difficult to allocate to a specific job. Burden is calculated as a percentage of direct wages or on a cost-per-hour basis.
Work-in-Process Accounting	Use when all expenses related to jobs still in progress are posted to a work-in-process asset account in the General Ledger module. When a job is completed, the total unbilled cost for the job is relieved from work-in-process and posted to the cost-of-goods-sold account.
Percentage Completion or Completed Contract	Either of these accounting methods may be used for each job. Percentage completion will recognize the revenue and cost of sale at the time a job is billed. With a completed contract, the revenue and cost of sales are not recognized until the job has been completed.
Time and Materials Invoices	Invoices may be printed with cost detail information on standard or user-defined custom invoice forms. Billing amounts may be based upon the price per unit or the markup over cost. Invoices may be printed in batch form or individually. Invoices for fixed contract jobs may also be printed.
Estimates for Proposals and Bids	Estimate information may be entered for bids using information from the estimate pricing files. You may establish templates to use for new estimates. When a contract has been accepted, the estimate information may be transferred to the new job to establish budgets. Estimates may be printed in detail or summary form.
Contract and Subcontract History	Contract information is retained to show the original contract amounts and any change orders. Change orders may also be tracked for each subcontract established for a job.
Job Transaction Detail Report	Transaction detail is provided for all postings for each job. The detail information may be retained for the life of the job or summarized on a monthly basis.
Subcontractor Analysis Report	Contract and cost detail is printed by vendor. A detailed transaction history of cost postings (by invoice number) and payments (by check number) may also be included. Lien amounts and release dates may be traced for each subcontractor.
Accounts Receivable Integration	Invoices may be entered, printed and updated to Accounts Receivable. Retention may be tracked for each customer.
Accounts Payable and Purchase Order Integration	Invoices may be expensed directly to jobs. Retention may be tracked for each vendor. Job cost information may be entered for open purchase orders. Receipt of goods and invoices allow for direct entry of job numbers and cost codes.
Payroll and Timecard Integration	Wages may be expensed directly to jobs. Labor expenses may be posted in detail by employee or summarized by pay period. Burden may be calculated and applied to labor costs. When the Timecard module is used, labor may be posted daily to Job Cost and weekly to Payroll. Timecard also prints a Certified Payroll report.
Inventory Management Integration	Direct costs associated with materials allocated to a job may be posted directly for any issue transactions entered through transaction entry.
Job Field Report Entry	Percentage completion and units (quantity) information may be entered for a job. The Job Field Report Worksheet may be printed and used to gather information in the field.